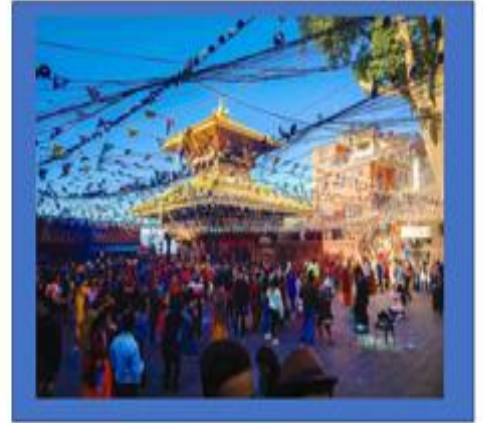


CHAITANYA TOUR'S AND TRAVELS



Nepal Tour Package

5 Night-6 Days

Gorakhpur-Lumbini-chitwan-Kathmandu-Pokhara-Gorakhpur

Day:1

We will receive you from Gorakhpur railway station or any other receiving point then we will begin our journey to **Lumbini or Saswot Dham**

● Lumbini



OR

● Saswot Dham



(Way to Chitwan night stay)

Day:2

We will visit-----

● Chitwan National Park

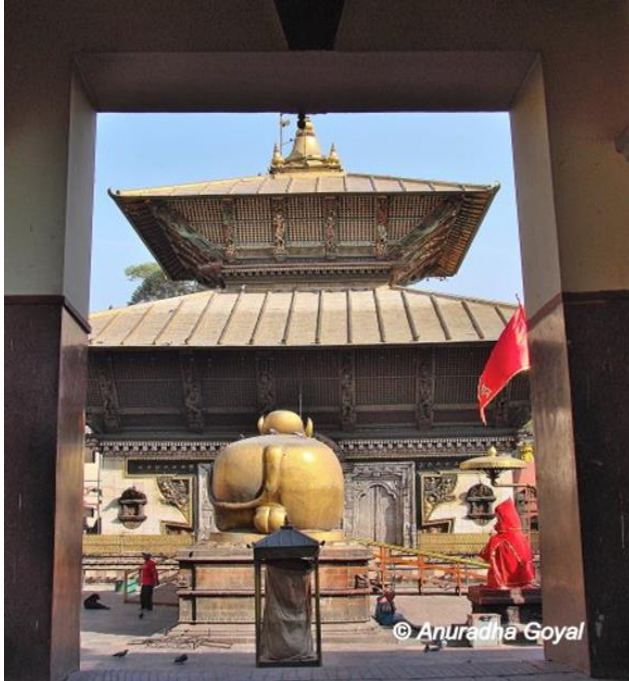


(Way to Kathmandu night stay)

Day:3

We will visit-----

● PashupatiNath Temple



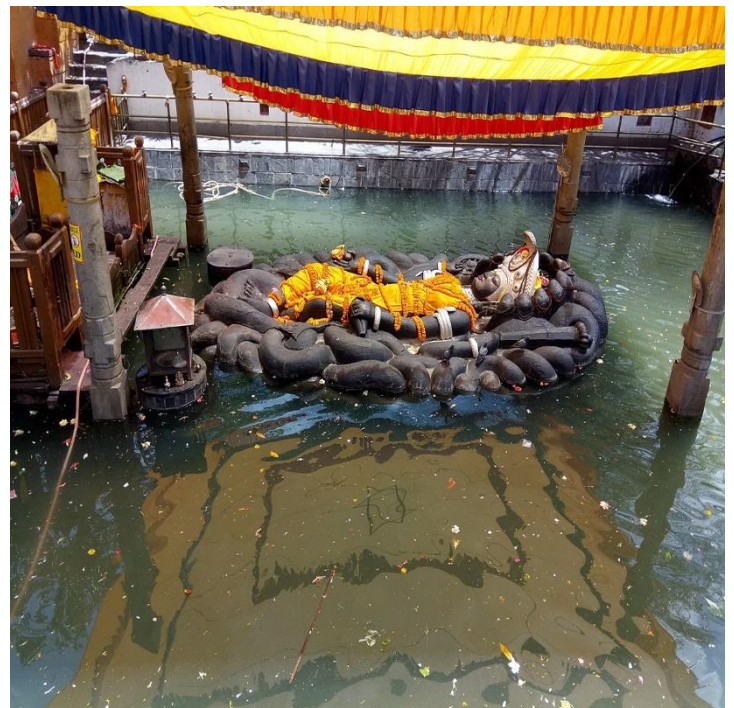
● Guheshwari Devi Temple



● Budha Stupa



● Budha-Nilkanth Temple



● SwayambhuNath Temple



Marketing

(End of 3rd day --- Night stay)



Day:4

Kathmandu to Pokhra via Manokamna Temple

● Manokamna Temple



(Night Stay at Pokhra)

Day:5

We will visit--

● Gupteshwar Mahadev Temple



● Davis Falls



● Vindhyavashini Temple



● Seti River



● Gurkha museum



● Mahendra cave



● Planetorium/Taramandal



● Barahi Temple



(Night Stay at Hotel)

Day 6: Dropping from Pokhara to Gorakhpur.

Contact us:

Mr. Manoj Kumar Kushwaha

Mob- +918957616199

Call or WhatsApp

+918299301002

Thank you 